

Black Forest

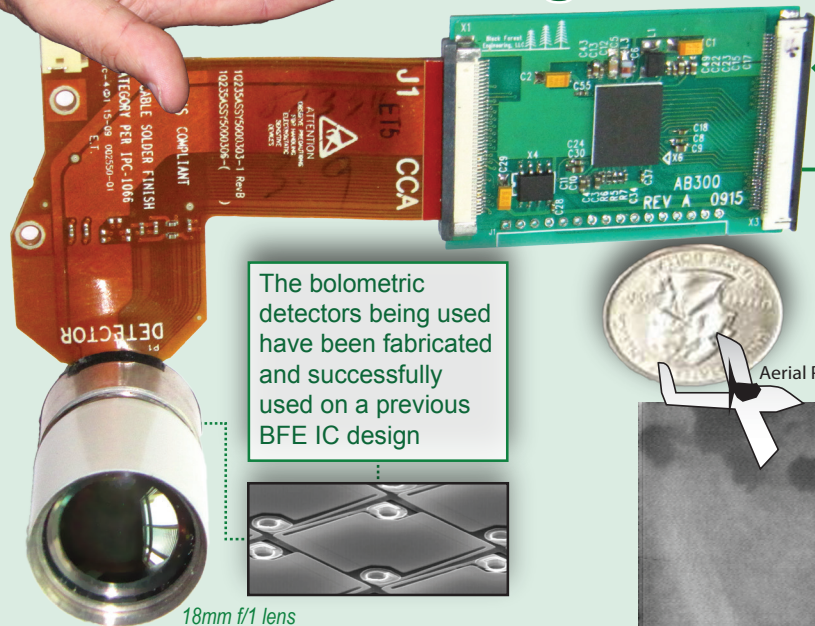
Engineering, LLC.



Ultra-lightweight, low power 640x480 Long Wave Infrared (LWIR) Camera



22.1g Camera



The bolometric detectors being used have been fabricated and successfully used on a previous BFE IC design

18mm f/1 lens

FEATURES

30 frames per second progressive scan

Non-uniformity Correction (NUC)

Mobile device technology used to optimize size and power

< 1 Watt of total power

Efficient on-board generation of required supplies & references

available prototypes

22.1 grams (18mm f/1 lens)

10.8 grams (11mm f/1 lens)

primary i/o

inputs

Regulated 3.3V

Unregulated 6V

Clock

outputs (multiple formats)

Analog : gamma controlled

Digital : 15 Bit parallel

CameraLink (available with additional board)

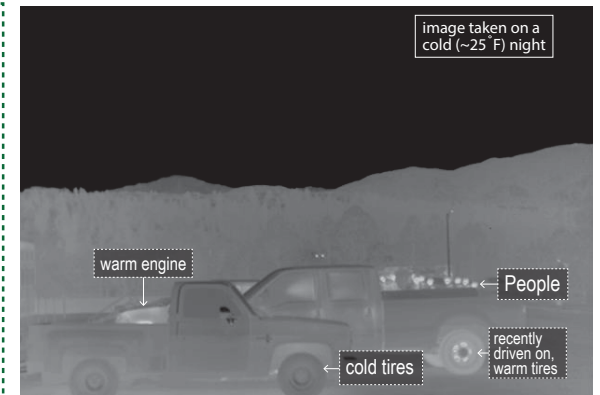


image taken on a cold (~25 F) night

Aerial Photo

Specifically designed as a micro air vehicle payload

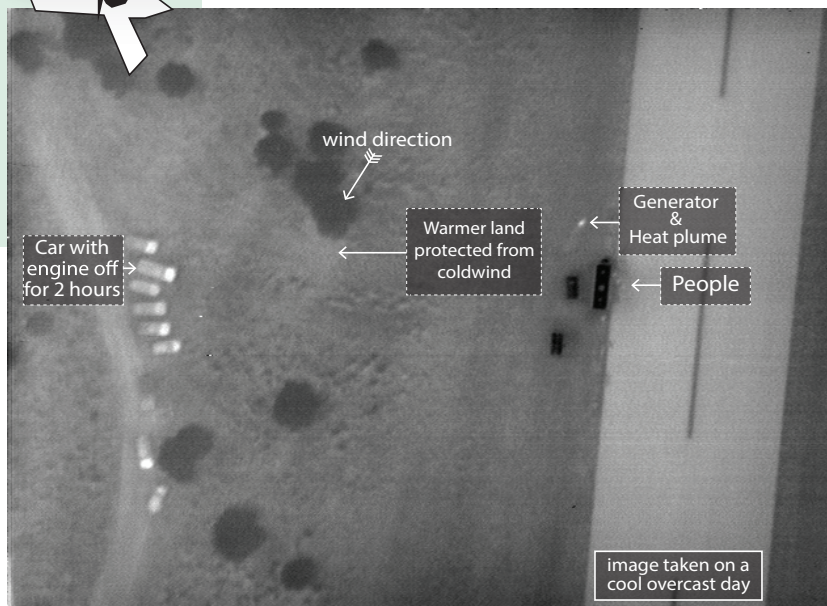


image taken on a cool overcast day

Development Funded By:

- Air Force Research Laboratory (AFRL)
- Defence Advanced Research Projects Agency (DARPA)

Black Forest

Engineering, LLC.



Colorado Springs, CO
www.BFE.com